



GMT MONTHLY MEMBERSHIP PROGRESS REPORT

Results as of: 5/31/2020

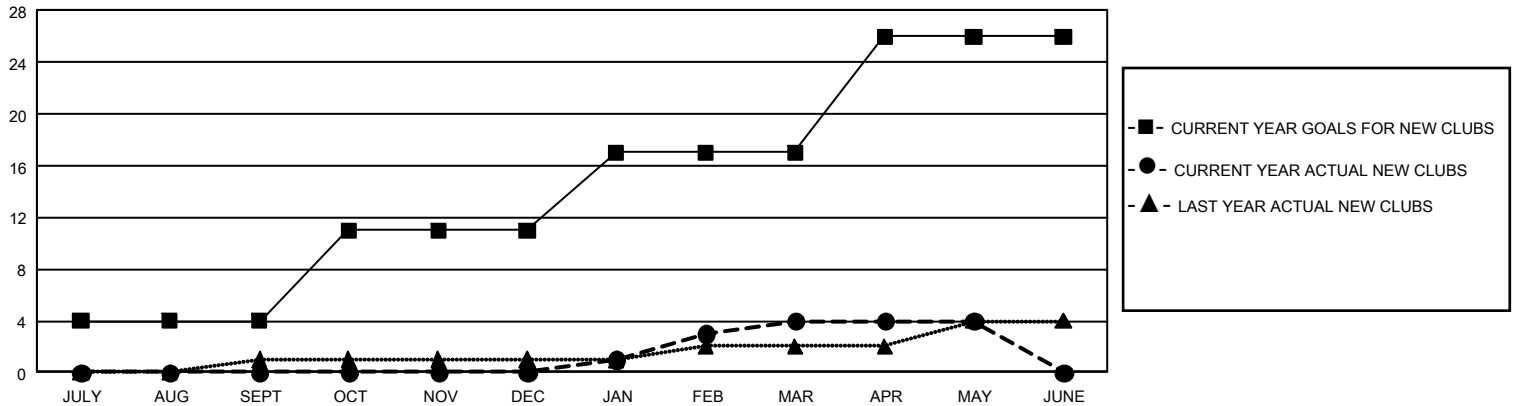
GMT Constitutional Area 1, Group N

GMT: OPEN

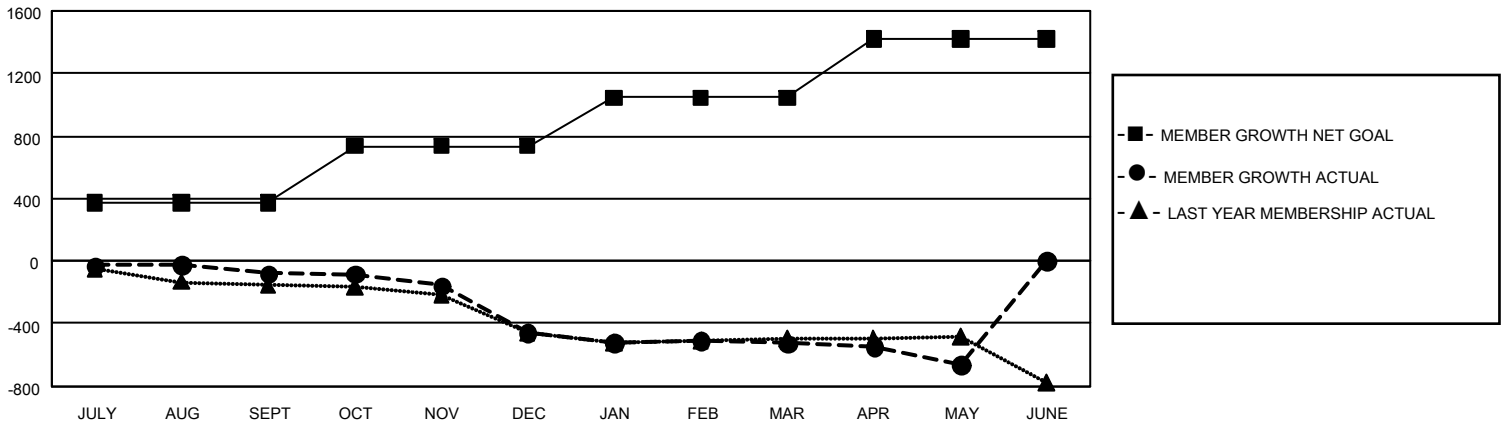
REPORT DOES NOT INCLUDE CLUBS IN UNDISTRICTED AREAS.

Clubs				Members			
RESULTS FOR 2019-2020				RESULTS FOR 2019-2020			
QUARTER	NEW CLUB GOAL	NEW CLUBS	DROPPED CLUBS	QUARTER	MEMBER GROWTH NET GOAL	MEMBER GROWTH ACTUAL	DROPPED MEMBERS ACTUAL (including transfers)
JULY/AUG/SEPT	12	0	1	JULY/AUG/SEPT	1,113	370	407
OCT/NOV/DEC	21	0	13	OCT/NOV/DEC	1,095	225	568
JAN/FEB/MAR	18	4	2	JAN/FEB/MAR	933	430	453
APR/MAY/JUNE	27	0	2	APR/MAY/JUNE	1,122	71	199

GOALS AND ACTUAL NEW CLUBS CUMULATIVE



GOALS AND ACTUAL MEMBERS CUMULATIVE



DROPPED CLUBS: 18	300 CLUBS OF 600 ADDED 1 OR MORE NEW MEMBERS	GENDER DISTRIBUTION
		MALE 8,939 (66.94%)
		FEMALE 4,414 (33.06%)
DROPPED MEMBERS	CLICK HERE FOR CUMULATIVE MEMBERSHIP DATA	TOTAL FAMILY UNIT MEMBERS 2,587
DECEASED 193		FAMILY MEMBERS PAYING HALF DUES 1,322
CLUB CANCELLED 114		
OTHER 1,320		
TOTAL 1,627		